

**2026 4-H NEW BRUNSWICK ANNUAL  
PROVINCIAL SHOW PROGRAM  
SEPTEMBER 3-5, 2026**

**TABLE OF CONTENTS**

|   |    |
|---|----|
| President’s Message                           | 2  |
| <b>SCHEDULE</b>                               | 2  |
| <b>General Information</b>                    | 9  |
| Camper Trailer and Tent Sites                 | 9  |
| <b>General Rules</b>                          | 10 |
| Registration Information                      | 10 |
| Judging Competition                           | 12 |
| <b>Livestock Entries</b>                      |    |
| Showmanship                                   | 13 |
| Beef  | 14 |
| Canine  | 15 |
| Dairy   | 16 |
| Goat – Dairy and Meat                         | 18 |
| Draft Horse                                   | 19 |
| Light Horse                                   | 20 |
| Miniature Horse                               | 22 |
| Poultry                                       | 23 |
| Rabbit  | 23 |
| Sheep   | 24 |
| All Livestock Costume Class                   | 25 |
| <b>Life Skills Project Entries</b>            |    |
| Cake Decorating                               | 26 |
| Cloverbud                                     | 26 |
| Crafts & Design                               | 26 |
| Foods   | 27 |
| Outdoor Living                                | 27 |
| Photography                                   | 27 |
| Scrap Booking                                 | 28 |
| Trash To Treasure                             | 28 |
| Woodworking                                   | 28 |
| Gardening                                     | 28 |
| Sugar Bush                                    | 28 |
| Miscellaneous Projects                        | 28 |
| Self or Group Determined Life Skills Projects | 28 |
| NB 4-H Record Book                            | 29 |
| New Brunswick Blueberry Muffin Competition    | 29 |
| Decorated Cake Competition                    | 29 |
| 4-H Club Scrapbook Competition                | 30 |
| 4-H Woodsmen Competition                      | 30 |
| 4-H NB Show Sponsors                          | 31 |
| I Practice Good Sportsmanship                 | 32 |
| Barn Prize Competition Form                   | 33 |
| Contagious Diseases Information               | 34 |

## **PRESIDENT’S MESSAGE**

Dear New Brunswick 4-H’ers,

It’s hard to believe our most anticipated event of the year is just around the corner, 4-H Provincial Show! I would like to take the time on behalf of the provincial show committee to ask you to attend this year and see all the wonderful aspects this event offers. Embracing our 4-H motto, “Learn to do by Doing” we hope our efforts will be the stepping stone for all our exhibitors to have a very successful provincial show.

Every year our committee has meetings to ensure the event is a success, but success in my eyes can’t be only measured by a well-planned event, or by staying perfectly on time with the show schedule. I measure success by seeing laughter and memories being made through all ages of 4-H members, seeing the product of your hard work on those early show mornings and all the late nights you had leading up to provincial show. I measure success by seeing fellow 4-H leaders getting to sit back and watch the knowledge they shared with their members being used.

The provincial show committee has worked hard to see those successful moments happen for another year. We’ve fine-tuned our show booklet, came up with new ideas for the schedule this year that we truly hope everyone likes as much as we do. 4-H New Brunswick has grown and developed so much since I was a 4-H member myself, and I am very proud to be a part of this growing change. It is challenging at times to find solutions for ideas due to the increased attendance and we are thrilled to see this increase, and hope to see it continue in the years to come.

I strongly encourage members, parents/guardians and leaders to read our show booklet and make yourself aware of anything pertaining to your projects. If you are unsure of things, you can always contact someone on the committee, council or our staff.

Special thank you goes to my fellow provincial show committee members and the 4-H New Brunswick Provincial Council for all your hard work this year to get us to this point. And a very big thank you to Ally, we would be lost without you. This show would truly not be possible without our 4-H’ers and leaders, you make this wonderful program what it is. And thank you to our sponsors, with your help we are able to see the growth in such an amazing event.

Last, I would like to wish all 4-H competitors, non-livestock and livestock, best of luck. Remember your success is not measured by ribbons and trophies, it is measured by the memories and lessons you will learn.

I am excited to see the success of this year’s “Pro Show” and look forward to seeing you all in Fredericton this September!

Ashley Storey,  
NB 4-H Provincial Show Committee Chair

### **Schedule:**

#### **THURSDAY, SEPTEMBER 3, 2026:**

|                       |  |
|-----------------------|--|
| 9:00 A.M – 3:00 P.M.  | <b>ALL</b> project animals must arrive on the show grounds and wait veterinarian approval before entering the barns. |
| 9:00 – 3:00 P.M.      | Drop off 4-H Life Skills Project articles.   |
| 11:00 A.M – 4:00 P.M. | Arena warm up for beef and dairy (must be leader/parent supervised)  |
| <b>4:15 P.M.</b>      | <b>Official Opening Ceremonies</b>   |
| <b>5:00 P.M.</b>      | <b>4-H JUDGING COMPETITION</b>   |
| 7:00 P.M.             | Pizza in Grandstands   |
| 7:00 P.M.             | Archery Demo   |
| 7:45 P.M.             | Dance  |
| 9:30 P.M.             | End of Program   |

**FRIDAY, SEPTEMBER 4, 2026:**

8:00 A.M.                                ***Fundraising Silent Auction*** – Each 4-H Club should contribute at least one item for this event. Auction will run from now until noon on Saturday.

8:00 A.M.

**4-H BEEF SHOW**

Cloverbud Beef Showmanship  
Pre-Junior Showmanship  
Junior Showmanship  
Intermediate Showmanship  
Senior Showmanship  
Champion Beef Showmanship

Junior Angus Heifer  
Senior Angus Heifer  
Champion Angus Heifer

Junior Charolais Heifer  
Senior Charolais Heifer  
Champion Charolais Heifer

Junior Crossbred Heifer  
Senior Crossbred Heifer  
Champion Crossbred Heifer

Junior Hereford Heifer  
Senior Hereford Heifer  
Champion Hereford Heifer

Junior Limousin Heifer  
Senior Limousin Heifer  
Champion Limousin Heifer

Junior Shorthorn Heifer  
Senior Shorthorn Heifer  
Champion Shorthorn Heifer

Junior Simmental Heifer  
Senior Simmental Heifer  
Champion Simmental Heifer

Junior Bull Calf Class  
Champion Junior Bull

Junior Steer  
Senior Steer  
Champion Steer

Champion Beef Animal

Group of Three Classes

Canadian 4-H Classic Junior Beef Heifer Show Selection

9:00 A.M.

**4-H RABBIT SHOW**

Cloverbud Rabbit Showmanship  
Junior Rabbit Showmanship

Senior Rabbit Showmanship  
Champion Rabbit Showmanship

Fancy Rabbit – Junior Doe  
Junior Buck  
Senior Doe  
Senior Buck

Champion Fancy Rabbit

Commercial Rabbit – Junior Doe  
Junior Buck  
Intermediate Doe  
Intermediate Buck  
Senior Doe  
Senior Buck

Champion Commercial Rabbit

Pet Rabbit

Champion Pet Rabbit

Champion Rabbit

9:00 A.M.

Judging of the 4-H Life Skills Projects

11:30 A.M.

**4-H CANINE SHOW**

Cloverbud Canine Showmanship  
Junior Canine Showmanship  
Senior Canine Showmanship  
Champion Canine Showmanship

Rally Novice  
Rally Intermediate  
Rally Advanced  
Rally Excellent  
Rally Master

1:30 P.M.

**4-H LIGHT HORSE SHOWMANSHIP**

Cloverbud Western Showmanship  
Cloverbud English Showmanship  
Junior Western Showmanship  
Junior English Showmanship  
Senior Western Showmanship  
Senior English Showmanship  
Champion Showmanship

Miniature Horse Showmanship  
Cloverbud showmanship  
Junior Showmanship  
Senior Showmanship

1:00 P.M.

Sugar Bush Project Quiz (in life skills area)

1:30 P.M.

DAIRY MEETING FOR ALL DAIRY MEMBERS/PARENTS – IN BARN

2:00 P.M.

4-H Life Skills Projects Exhibit Opens.

2:00 P.M.

**4-H LIGHT HORSE RIDING CLASSES**

Cloverbud English Equitation  
Junior English Equitation  
Senior English Equitation

Cloverbud English Pleasure  
Junior English Pleasure  
Senior English Pleasure

Cloverbud Western Equitation  
Junior Western Equitation  
Senior Western Equitation

Cloverbud Western Pleasure  
Junior Western Pleasure  
Senior Western Pleasure

Cloverbud Walk-Jog Equitation  
Junior Walk Jog Equitation  
Senior Walk Jog Equitation

Cloverbud Walk-Jog Pleasure  
Junior Walk-Jog Pleasure  
Senior Walk-Jog Pleasure

Cloverbud Barrel Race  
Junior Barrel Race  
Senior Barrel Race  
Walk-Jog Barrel Race

3:00 P.M.

Beef Judge Presentation – all member's welcome

5:00 P.M.

**4-H DRAFT/MINI HORSE SHOW**

Cloverbud Ringside Dress  
Cloverbud Draft Horse Showmanship  
Junior Ringside Dress  
Junior Draft Horse Showmanship  
Senior Ringside Dress  
Senior Draft Horse Showmanship  
Champion Draft Horse Showmanship

Cloverbud Draft Horse Under Saddle  
Junior Draft Horse Under Saddle  
Senior Draft Horse Under Saddle

Cloverbud Draft Horse Single Wagon/Cart  
Class  
Junior Draft Horse Single Wagon/Cart Class  
Senior Draft Horse Single Wagon/Cart Class

Cloverbud Scoot Class  
Junior Scoot Class  
Senior Scoot Class

5:30 P.M. – 6:30 P.M.            Corn Boil/ Barbecue

6:30 P.M.                            Small and Large Animal 4-H Livestock Costume Class

7:00 P.M.                            Kettle Boil/Farmer’s Olympics

9:30 P.M.                            End of Program

**SATURDAY, SEPTEMBER 5, 2026**

8:00 A.M.                            **4-H DAIRY SHOW**  
Cloverbud Dairy Showmanship  
Pre-Junior Dairy Showmanship  
Junior Dairy Showmanship  
Intermediate Dairy Showmanship  
Senior Dairy Showmanship  
Champion Dairy Showmanship

Ayrshire Summer Calf  
Ayrshire Spring Calf  
Ayrshire Winter Calf  
Ayrshire Fall Calf  
Ayrshire Summer Yearling  
Ayrshire Spring Yearling  
Champion Ayrshire Heifer

Jersey Summer Calf  
Jersey Spring Calf  
Jersey Winter Calf  
Jersey Fall Calf  
Jersey Summer Yearling  
Jersey Spring Yearling  
Champion Jersey Heifer

Holstein Summer Calf  
Holstein Spring Calf  
Holstein Winter Calf  
Holstein Fall Calf  
Holstein Summer Yearling  
Holstein Spring Yearling  
Champion Holstein Heifer

Brown Swiss Summer Calf  
Brown Swiss Spring Calf  
Brown Swiss Winter Calf  
Brown Swiss Fall Calf  
Brown Swiss Summer Yearling  
Brown Swiss Spring Yearling  
Champion Brown Swiss Heifer

Milking Shorthorn Summer Calf  
Milking Shorthorn Spring Calf  
Milking Shorthorn Winter Calf  
Milking Shorthorn Fall Calf  
Milking Shorthorn Summer Yearling  
Milking Shorthorn Spring Yearling

Champion Milking Shorthorn Heifer

Champion Dairy Animal

4-H Exhibitor Herd Class

Canadian 4-H Dairy Classic Junior  
Dairy Show Selection

9:00 A.M.

4-H Life Skills Projects Exhibit Opens

9:00 A.M.

**4-H SHEEP SHOW**

Cloverbud Sheep Showmanship  
Junior Sheep Showmanship  
Senior Sheep Showmanship  
Champion Sheep Showmanship

Suffolk Ewe Lamb  
Suffolk Ram Lamb  
Suffolk Yearling Ewe  
Suffolk Mature Ewe  
Suffolk Market Lamb  
Champion Suffolk

North County Cheviot Ewe Lamb  
North County Cheviot Ram Lamb  
North County Cheviot Yearling Ewe  
North County Cheviot Mature Ewe  
North County Cheviot Market Lamb  
Champion North County Cheviot

Dorset Ewe Lamb  
Dorset Ram Lamb  
Dorset Yearling Ewe  
Dorset Mature Ewe  
Dorset Market Lamb  
Champion Dorset

Hampshire Ewe Lamb  
Hampshire Ram Lamb  
Hampshire Yearling Ewe  
Hampshire Mature Ewe  
Hampshire Market Lamb  
Champion Hampshire

Crossbred Ewe Lamb  
Crossbred Ram Lamb  
Crossbred Yearling Ewe  
Crossbred Mature Ewe  
Crossbred Market Lamb  
Champion Crossbred

All Other Breeds Ewe Lamb  
All Other Breeds Ram Lamb  
All Other Breeds Yearling Ewe  
All Other Breeds Mature Ewe

All Other Breeds Market Lamb  
Champion All Other Breeds

Champion Sheep

Royal Winter Fair Junior Sheep Show Selection Class

Flock Class

11:30 P.M.

**4-H POULTRY SHOW**

Cloverbud Showmanship  
Junior Showmanship  
Senior Showmanship  
Champion Showmanship

Pullet  
Cockerel  
Hen  
Cock

Champion Poultry Animal

11:00 A.M.

**4-H GOAT SHOW**

Cloverbud Showmanship  
Junior Showmanship  
Senior Showmanship  
Champion Showmanship

Chevron  
Doeling  
Dry Yearling Doe  
Milking Doe

Champion Dairy Goat

Meat Market Goat  
Junior Meat Breeding Doe  
Senior Meat Breeding Doe  
Yearling Meat Dry Breeding  
Two-Year-Old Meat Goat

Champion Meat Goat  
Champion Goat

12:00 P.M.

Silent Auction closes for bidding.

(Immediately following the  
Dairy Show)

Overall 4-H Champion Show person

Trophy Presentation and Closing Ceremony  
Barn Display Winners

5:00 P.M

Departure of livestock and life skills projects  
Exhibits

## **General Information**

NBEX PID: NB1202188

If anyone has a Perpetual Trophy from a previous year it should be brought with you to the show and turned into award in 2026.

For any further information regarding the 2026 4-H NB Show, please do not hesitate to contact the following:

### **4-H New Brunswick Provincial Show Committee Executive:**

|                 |                          |               |
|-----------------|--------------------------|---------------|
| President:      | Ashley Storey            | Tel: 434-8223 |
| Vice President: | Ella Flewelling          | Tel: 328-7644 |
| Secretary:      | Jayde McConchie          | Tel: 476-1441 |
| Treasurer:      | Ally Bauchman (4-H N.B.) | Tel: 324-6244 |
| Past-President: | Alain Blanchette         | Tel: 852-0181 |
| Registrars:     | 4-H New Brunswick        | Tel: 324-6244 |

Any rule changes at the show must be made by a minimum of 5 of the 9 voting members of the Provincial Show Committee. Rule infractions will be dealt with at the discretion of the committee and the NB 4-H Board of Directors. NB 4-H Board of Directors will have make the final decision.

**There will be specific spots designated in the barn area for each 4-H club with livestock projects. Please make sure you are in your designated spot.**

There will be a **barn exhibit competition** for all livestock projects, with a prize of \$25.00 going to the best club project exhibit in each project category. Guidelines for these competitions can be found at the back of this booklet. **Decorative lighting cannot be used in the barn display competition. Parents and leaders may assist members in decorating their displays only when safety is a concern. Members are expected to do the decorating themselves.**

## **Camper Trailer and Tent Sites:**

Trailer hook ups (travel trailers) are available at no charge. If you wish to book a space for a camper trailer, please complete this form by August 18<sup>th</sup>: [Camper Trailer Site Booking for NB 4-H Provincial Show](#)

If exhibitors wish to stay in a tent, please inform the Provincial Office at [director@nb4h.com](mailto:director@nb4h.com). Arrive with your camping gear and you may set up anywhere on the infield. There can be no campfires or vehicles at the campsites and tents must be removed by 5pm on Saturday.

**NOTE: EXHIBITORS GETTING ANIMALS READY FOR SHOWING WILL HAVE PRIORITY FOR POWER.**

**Overnight Accommodations** are the responsibility of the members. In Fredericton, there are several Hotel options; The Fredericton Inn 1(800) 561-8777; Delta Hotels (506) 457-7000; Quality Inn & Suites Amsterdam (506) 474-5050; Chateau Fredericton (506) 300-1818; Comfort Inn (506) 453-0800; Holiday Inn Express (506) 459-0035; Hilton Garden Inn (506) 999-1551; Crowne Plaza (506) 455-3371.

The 4-H section for the life skills projects display will be open during the show after judging is completed.

**2026 4-H N.B. SHOW RULES AND REGULATIONS**  
**GENERAL RULES**

- l.a) Failure by an individual to comply with any of the 4-H N.B. Show rules and regulations will be reviewed by the 4-H N.B. Show Executive and appropriate action will be taken. Rule infractions will be dealt with at the discretion of the committee and the NB 4-H Board of Directors. NB 4-H Board of Directors will have make the final decision.
- b) **A club must be in good standing with the NB 4-H Council, i.e., membership dues paid, for the 2025-2026 project year in order for its members to participate in the 4-H NB Show.**
- c) **4-H Competitions are open to New Brunswick 4-H members who have achieved at the club level, with their Achievement Day exhibit(s) in the year of the show.** Members can bring the number of project animals they have achieved with (in accordance with project guidelines).
- d) All judges' decisions are final.
- e) **Members must show their own project animals unless he/she is exhibiting more than 1 animal in a class. Then the member must show one animal and another member(s) must show the other(s). If an emergency situation arises where an animal is out of control, an adult may step in to assist the member, but the member must remain present. If a Cloverbud is showing livestock a parent or guardian must be present at all times when they are working with or exhibiting their project animal.**
- f) Only 4-H project animals that are registered and participating in the N. B. 4-H Show may be housed in the barn.
- g) No smoking in the barns.
- h) **This is a 4-H activity; therefore, no alcohol or drugs will be tolerated. Please make sure that all individuals that are connected with your 4-H group adhere to this rule as well.**
- i) **All members must wear a large 4-H crest during all competitions. If you do not have one, you can purchase one in the 4-H life skills project exhibit area for \$ 4.00.**
- j) No profanity (foul language) will be tolerated.
- k) Coaching of 4-H members from the side-lines is prohibited.
- l) 4-H members **MUST** wear proper fitting and safe footwear for the duration of the show – no open toe sandals or shoes will be permitted.
- m) Vaccinations are strongly recommended for all livestock. Please consult your veterinarian for guidelines on a vaccination program for your animal.
- n) Screened leaders will be identified by a lanyard nametag. Only those who are fully screened and in good standing will receive the lanyard. The lanyard will need to be returned at the end of the show to be used in years to come.
- o) Anyone who is NOT a **current 4-H youth member** is prohibited to clip, wash, clean, or handle the 4- H member's project animal(s). If there is a safety concern and a leader/parent or guardian needs to help the member, then it should be declared to a member of the show committee prior to the start date of the show. If members have more than one animal in any project, then a parent/guardian/leader can assist in moving the animal from the barn to the ringside and return. If someone who is not registered as a 4-H youth member is reported to be working on or with a 4-H animal, then the person will be issued a warning from a member of the show committee. There will be no second warning; if the person violates this rule twice, then the member and the animal will be disqualified from the show and the Royal selection (if registered for it).
- p) Royal Teams: Members may try out for all three Royal teams (beef, sheep, and dairy). If members make more than one team, they must pick only one (1) team they want to pursue. They must let the provincial office know their decision immediately following the Overall Showmanship on Saturday.
- q) Beef Tie Outs – Tie outs are available for beef members. Members must provide their own straw if they wish to use the tie outs. Shavings will not be permitted in the tie out area. Members must supply all their own neck ties. Members must clean manure out of the tie outs before they depart on Saturday. Tie outs will be beside the outdoor show ring and will be first come, first served.

**REGISTRATION**

- 2.a) It is the responsibility of the member to register themselves for the 2026 Provincial Show online from July 1<sup>st</sup> to August 1<sup>st</sup>. **Attention all members:** If your achievement day takes place after Aug. 1, you are required to **pre-register** by August 1<sup>st</sup> if you plan on attending the NB 4-H Show. Cheques or money orders must be sent in before the show. If this proves difficult, please consider holding your achievement day prior to Aug. 1, or give your achievement day date on the pre-registration form and make a request for a refund the next day. (Immediately following Achievement Day).
- b) Livestock Entry fees of **\$25 per 4-H project per member**; i.e., if one member shows one horse (\$25) & one rabbit

(\$25) = \$50; 2 beef (\$25/project, not per animal) & 2 rabbits (\$25) = \$50.

Life Skills Projects Entry fee \$5 per article. **All Registration fees must be received by August 1<sup>st</sup>. Cheques are to be made payable to N.B. 4-H Council. Etransfers can be sent to [director@nb4h.com](mailto:director@nb4h.com). The club will receive an invoice and will be responsible for collecting payment from members and sending to NB 4-H in one payment.**

- c) **All project animals must have been identified on the proper registration form with the Provincial 4-H Office by May 31. Rabbit, Poultry and Cloverbud beef/dairy need to be registered by July 1. All livestock project animals must have their government issued tag to identify them with the exception of horse, rabbit, poultry and canine. All members/leaders sending in registration forms should be familiar with rules regarding ringworm, warts and other infectious diseases and agree to abide by them.**
3. Any animal registered with the 4-H N.B. Show may be selected to be used in judging competition. (This selection will be random on the day of the show). This will not interfere with the exhibiting of the 4-H member's animal.
4. **Transportation of articles to and from the 4-H NB Show is the responsibility of the member exhibiting. Articles must be delivered between 9:00 a.m. and 3:00 p.m. on Thursday, September 3<sup>rd</sup> to the 4-H area in the life skills projects exhibit area of the barn and retrieved on Saturday, September 5<sup>th</sup> immediately following the closing ceremonies. The 4-H N.B. Show Committee will not be responsible for articles not picked up after this time as they will be left unsupervised. Clubs or districts may want to work together to arrange transporting the articles to and from the show.**

**ALL** project animals must arrive on the show grounds between 9:00 a.m. – 3:00 p.m. on **Thursday, September 3<sup>rd</sup>** to be inspected by the veterinarian upon their arrival. They must remain until after closing ceremonies on Saturday. Stabling will be provided Thursday and Friday nights. **All exhibits must be in their designated 4-H area for the duration of the Show.** (with the exception of canine who must go with the 4-H member at night.)

5. A **Cloverbud** member shall be one whose age is between 6 and 8 years of age as of January 1, 2026.
6. A **Junior** member shall be one whose age is between 9 and 13 years as of January 1, 2026.
7. A **Senior** member shall be one whose age is between 14 and 21 years as of January 1, 2026.
8. *If any errors are noted, corrections will be made at the 4-H N.B. Show. All announcements at show time, written or oral, supersede any material written in the Rules and Regulations.*
- 9.a) Stable areas must be kept neat and clean with animals in this area unless they are showing, washing, or grooming. **A standard amount of a first bedding will be provided for livestock projects. Bedding will be on a limited basis so members may want to consider bringing their own if they will need more than the standard amount. At the end of the show, bedding in livestock stalls must be cleaned away from the wall, to the centre. Horse Stalls must be cleaned out as well.**
- b) Sickness or injury is not the responsibility of the Show Committee. The Committee reserves the right to contact a veterinarian at the expense of the exhibitor should the need arise. A health check will be done on all animals at the 4-H New Brunswick Show.
- c) **Animals with contagious diseases or showing any signs or symptoms of one cannot be exhibited at the 4-H N.B. Provincial Show. This opens exposure to other farms and places an undue liability on the 4-H program. Any member breaching this policy by bringing contagious animals to the show or withholding information that they have an animal that is not healthy will not be able to participate in any portion of the show and the animal must be sent home immediately at their own expense. This member will also be solely responsible for any liability recourse that follows.** On-site (show) veterinarian's decision is final and 4-H members please be respectful with our veterinarians and their decisions. **There will be no animal substitution at the show.**
- d) Transportation of the animals is the responsibility of the 4-H member.
- f) Record books may be displayed.
- g) 4-H N.B. Show Committee may request 4-H members' birth certificates or Medicare cards for proof of age.

10. In the event of an unfortunate incident involving a project animal or a life skills project article; e.g., contagious disease, warts, ringworm, sudden lameness, death, loss in fire, something spilled on article, to an animal or an article to be used on achievement day or to compete at the 4-H NB Show, the following protocol in dealing with the incident is required:
- i.) Member informs his/her project leader and organizational leader as soon as possible once aware of the problem.
  - ii.) The Provincial 4-H Office must be informed.
  - iii.) In the case of livestock, a vet's certificate or proof of death by a witness must be obtained as to the state of the animal. The member, project leader and the organizational leader must put in writing the events surrounding the incident and submit these to the NB 4-H Council Office.
  - iv.) The 4-H NB Show Committee then makes a decision on letting the member compete at the 4-H NB Show.
  - v.) If the animal/article is to be replaced, a comparable animal/article must be used, but not another 4-H member's project animal/article. This must be approved before the show as there is no animal substitution at the show.
  - vi.) In the case of a life skills project article, the same protocol is recommended with the exception of the vet's certificate/proof of death.
11. The show committee reserves the right to remove any animal from the show that becomes unmanageable. All livestock will be housed by project not 4-H club. All 4-H project animals must be housed with the 4-H display and not in the open area of the show.

**CLUBS:**

CENTRAL: Big Axe Rangers, Harvey, Keswick, Triangle

EASTERN: Chignecto, Coverdale Albert County, Irishtown, McKees Mills, Tri-Point

NORTHEAST: Napan, Triple K

SOUTHERN: Farm Fresh, Gentle Giants & Friends, Kings County Beef, Sussex Holstein

WESTERN: Countryside, River Valley, Debec

**JUDGING COMPETITION:**

**All members who have achieved in the 2025-2026 4-H year are encouraged to participate, even if they do not have anything registered in the show.**

**Please note:**

Cloverbuds – it is mandatory that all their reasons be given orally. Cloverbuds may look at the project when giving their reasons.  
 Juniors – it is mandatory that all their reasons be given orally. Juniors cannot look at the project while giving their reasons.  
 Seniors – it is mandatory that all their reasons be given orally. Seniors cannot look at the project while giving their reasons.  
 Members who require special accommodations should contact a member of the Provincial Show Committee to arrange any accommodations. Cloverbuds may have a scribe who is not a parent/guardian to accompany them. Members can have a translator accompany them if needed.

**JUDGING (classes may change based on availability of livestock/materials):**

|                      |   |
|----------------------|---|
| Beef                 | i) Cloverbud<br>ii) Junior<br>iii) Senior |
| Dairy                | i) Cloverbud<br>ii) Junior<br>iii) Senior |
| Poultry              | i) Cloverbud<br>ii) Junior<br>iii) Senior |
| Draft or Light Horse | i) Cloverbud<br>ii) Junior<br>iii) Senior |

|               |   |
|---------------|---|
| Soils         | i) Cloverbud (priority given to seniors)<br>ii) Junior (priority given to seniors)<br>iii) Senior |
| Crafts        | i) Cloverbud<br>ii) Junior<br>iii) Senior   |
| Foods – Steak | i) Cloverbud<br>ii) Junior<br>iii) Senior   |

Cloverbud Judging Class – for Cloverbud members only

The location of the judging competition is the main arena. Members must work on their own; no talking or peeking during the competition. Members who do not comply with this may lose their card. All members, excluding cloverbuds, must not look at the project while giving their oral reasons.

**The 3 separate judging competitions will be:**

1. Those members interested in **judging one project only**. They have 10 minutes to judge just that one project.
2. The **Overall Judging Competition**. This group judges all available classes except for the Cloverbud class. The members will have 90 minutes in which to complete all 7 projects.

The **Canadian National 4-H and Youth Judging Competition** - 4-H members in good standing, who are 17 through 21 years of age as of January 1, 2026, are eligible to win a spot on the 4-H Atlantic Judging Team to go to the Canadian Western Agribition in Regina, Saskatchewan in November. Members who have represented the 4-H N.B. Program at Agribition are not eligible to return – we will be selecting the next eligible 4-H member to attend the competition on our behalf. To qualify, members must judge beef, dairy, light horse, milk composition, first aid kits, and grain.

\*Members can judge as many or as few classes as they want. Each member is encouraged to judge all projects. Each project they judge, they will get their name entered into a draw for a prize. \*

**Awards** (The top member from each project will be recognized at the show during the closing ceremonies. Please see additional awards and criteria below)

1. **The New Brunswick 4-H Dairy Sportsmanship Award** In memory of Arthur Versloot - The recipient must be a 4-H dairy member that has demonstrated some of the top qualities that Arthur had i.e. (dedicated to 4-H, friendship, sociable, encouraging, enthusiastic, unselfish, courteous, helpful, hardworking and an overall good sport). The winner will be selected at the NB 4-H Provincial Show and will receive an award at the closing ceremonies.
2. **Cole T. Hunter Sportsmanship Award** In memory of Cole T. Hunter – The recipient can be any 4-H member who exhibits a hard work ethic, is helpful to other members, and is always showing a positive attitude. The winner will be selected at the NB 4-H Provincial Show and will receive an award at the closing ceremonies.
3. **Best NB Bred and Owned** sponsored by Clark Farms: This award is to encourage members to use animals who are bred and owned locally in the province.

**SHOWMANSHIP**

- a) **Heat cycle (oestrus) is not an acceptable reason for substituting an animal for showmanship.**
- b) All members must show their own 4-H animals.
- c) No stallions permitted. The only bulls permitted are those registered in the Junior Bull class.
- d) Champions and reserves from each project’s showmanship class will compete in the Overall Showmanship Competition. There must be at least two members exhibiting in the project to be part of the overall showman competition. Overall have 2 at each project, Alternate (Honourable Mention) will move up if someone is showing in two projects – once they choose the project they are going to compete in. Go in rotation order. All participants must wear hard soled shoes or boots for safety reasons.

- e) Members must show in proper **show attire**: Beef – white shirt and black pants with hard soled boots; Canine – white shirt and black pants; Dairy – white shirt and white pants with hard soled boots; Dairy Goat – white shirt and white pants with hard soled boots. Draft horse – proper show clothes and hard-soled boot; Light horse – appropriate attire for Western or English horsemanship, according to project achieved in; Meat Goat – white shirt and black pants with hard soled boots; Poultry – white lab coat; Rabbit - white lab coat; Sheep – white shirt and black pants with hard soled boots. All members must wear a large 4-H crest. No hats allowed except for horse members where permitted.
- f) Showmanship Classes and ages for Beef and Dairy are as of January 1, 2026:

|                |             |
|----------------|-------------|
| Cloverbud -    | Ages 6-8    |
| Pre- Junior –  | Ages 9 - 11 |
| Junior –       | Ages 12-14  |
| Intermediate – | Ages 15-17  |
| Senior –       | Ages 18-21  |

**Overall Champion Showmanship Competition for each livestock project. This competition immediately follows the dairy show.**

**You can only participate in the showmanship class in the project you achieved in.**

**CLASSES: BEEF**

- a) A Summer calf (Cloverbud’s only) will be born between June 1 and June 30, 2026.
- b) A Junior calf will be born between Jan. 1 and April 30, 2026.
- c) A Senior calf will be born between Jan. 1 and Dec. 31, 2025.
- d) If there are less than 3 in a class, they will be put in an all-other breeds class.
- e) Cloverbuds may only show a junior calf born in the calendar year. A junior member in their first year of showing beef can only show one project animal excluding a market steer. Their project animal can either be a junior animal, or a senior animal. Other first and second year 4-H beef members can exhibit two animals from the options listed below if they wish:
  - 1. A heifer and a steer – one junior and one senior
  - 2. Two steers – one junior and one senior
  - 3. Two heifers – one junior and one senior
- f) A member who has achieved at least two years in the beef project is eligible to exhibit four animals. The member’s four animals must be four of the five in the following list:
  - 1. Junior Heifer
  - 2. Senior Heifer
  - 3. Junior Steer
  - 4. Senior Steer
  - 5. Junior Bull (no yearling bulls are allowed from any member or any age)

NOTE: In one year, a member cannot show three heifers, two junior heifers, two senior heifers, two junior steers, or two senior steers. Only one 4-H steer can be sold at a market show each year. 4-H members may use their last year’s junior heifer or junior steer project animal.
- g) To select for the beef members to compete in the Showmanship category for the National Junior Beef Heifer Show at the Royal Winter Fair –We will be sending the eight best conformation heifers followed by the top two show persons who are not involved with the eight best conformation heifers to make up a team of 10 heifers. 1<sup>st</sup> and 2<sup>nd</sup> Alternates will be selected and will replace one of the 10 team members should they no longer be able to attend. The 1<sup>st</sup> alternate will be expected to participate in all fundraising efforts but will not travel to the Royal with the team. The judge reserves the right to pick less than 10 heifers if he/she feels the calves are not of RAWF quality. Members must be in good standing to participate in the selection class. All members who are interested in trying out for the Royal must have their calves registered and their non-refundable \$50 deposit paid to the Provincial office by August 1<sup>st</sup>. Members must use the calf they have selected as their Royal calf for showmanship. For rules and regulations at the Royal, please visit: [NJBHS Competition • The Royal Agricultural Winter Fair \(royalfair.org\)](http://royalfair.org)

**VACCINATIONS:** Please consult with your veterinarian for a vaccination plan for your animal.

**Class 1: Showmanship**

- Section 1. Cloverbud - Ages 6-8  
2. Pre- Junior – Ages 9 - 11  
3. Junior – Ages 12-14  
4. Intermediate – Ages 15-17  
5. Senior – Ages 18-21

**Class 2: Angus Heifers**

- Section 1. Summer Heifer  
2. Junior Heifer  
3. Senior Heifer

**Class 3: Charolais Heifers**

- Section 1. Summer Heifer  
2. Junior Heifer  
3. Senior Heifer

**Class 4: Crossbred Heifers**

- Section 1. Summer Heifer  
2. Junior Heifer  
3. Senior Heifer

**Class 5: Hereford Heifers**

- Section 1. Summer Heifer  
2. Junior Heifer  
3. Senior Heifer

**Class 6: Limousin Heifers**

- Section 1. Summer Heifer  
2. Junior Heifer  
3. Senior Heifer

**Class 7: Salers Heifers**

- Section 1. Summer Heifer  
2. Junior Heifer  
3. Senior Heifer

**Class 8: Shorthorn Heifers**

- Section 1. Summer Heifer  
2. Junior Heifer  
3. Senior Heifer

**Class 9: Simmental Heifers**

- Section 1. Summer Heifer  
2. Junior Heifer  
3. Senior Heifer

**Class 10: Beef Steers**

- Section 1. Summer Steer  
2. Junior Steer  
3. Senior Steer

**Class 11: Bull Calf**

- Section 1: Junior Bull

**Champion Beef Animal**

**Class 12: Group of Three Classes**

**Royal Selection Class for the 2026 Junior Beef Heifer Show**

**CLASSES: CANINE**

All canine exhibitors must have their displays set up by 3:00 p.m. on Thursday, September 3<sup>rd</sup>. Dogs cannot stay in the barn all night. All dogs must be on a short leash (no longer than a 4-6-foot lead) at all times when not showing. Member is responsible to clean up after his/her dog. Space will be provided in the barn during the day for dogs. Members must provide their own kennel/carrier. Dogs may be exercised in an approved area only. Aggressive dogs must be muzzled. The show committee reserves the rights to select the dogs that will be used in overall showmanship if there are safety concerns.

**VACCINATIONS:** It is recommended that dogs be vaccinated every year for Distemper, Parvovirus, Adenovirus, Parainfluenza, and for Rabies every three years. Kennel cough/Bordetella is also recommended and if there is Leptospirosis in your area, please vaccinate for this as well. Also consider vaccinating for Lyme disease.

**LAMENESS:** “Lame” defined as any condition which affects a dog’s locomotion. A dog with a withered or amputated limb or has a chronic condition such as arthritis will **not** be dismissed from the class when a vet’s letter/note permits the dog to participate and is submitted prior to the class.

**LEASH & COLLARS:** The leash used in all the classes shall be approximately 4-6 feet long and must be fabric or leather. As each handler enters the ring, the judge shall see that the dog has on either a well-fitting plain buckle (metal or plastic) collar or a martingale collar. Slip collars and choker chains are not acceptable. Special training collars or collars that are either too

tight or so large that they hang down unreasonably in front of the dog, are not permitted. There shall not be anything hanging from the collars. Collars other than those specified in these rules are not allowed within the venue. Violation of this may result in the removal of the dog from further competition at that obedience trial.

Showmanship Leash & Collar – a smaller shorter leash is used. Ideally the length should be from the member’s hip to the dog’s neck (with head held erect).

**PRAISE, FOOD, PETTING:** Moderate praise and moderate petting is allowed between exercises providing the dog is under control. A handler is NOT permitted to bring food, toys, or other training aids into the ring for either **OBEDIENCE OR SHOWMANSHIP**.

**SIGNALS &/OR COMMANDS:** In all parts of all exercises performed in the ring, only one single command (verbal) or signal may be given by the handler. It must be a single gesture with either arm or hand only and then the arm must be returned immediately to its normal position. The handler shall not touch the dog. Signalling correction to the dog from a distance is forbidden. Any unusual noises or motions may be considered to be signals. The dog’s name may be used once immediately before any verbal command. When the dog is in heel position, the handler is permitted to bend body and knees so that the hand is brought to the dog’s eye level. Members should complete at least one year on-leash (novice and intermediate) before moving ahead to off-leash.

**Canine rally will be judged on the following criteria:**

**Class 13: Showmanship**

- Section 1. Cloverbud
- 2. Junior
- 3. Senior

**Class 14: Rally**

|   |                           |   |
|---|---------------------------|---|
| <b>Section 1</b>  | <b>Rally Novice</b>       | as described in CKC rule book for novice rally. All exercises on leash.                 |
| <b>Section 2</b><br>on leash.                                 | <b>Rally Intermediate</b> | as described in CKC rule book for rally intermediate. All exercises still on leash.     |
| <b>Section 3.</b><br>advanced Rally.                          | <b>Rally Advanced</b>     | All exercises are off lead one jump. As described in CKC rule book for advanced Rally.  |
| <b>Section 4.</b><br>book for rally.                          | <b>Rally Excellent</b>    | All exercises are preformed off lead. 2 jumps. As described in CKC rule book for rally. |
| <b>Section 5.</b><br>As described in CKC rule book for rally. | <b>Rally Master</b>       | All exercises are preformed off lead. 2 jumps. More complicated signs.                  |

**Canine Showmanship classes** will consist of the dogs being gaited around the perimeter of the ring, then examined one by one and moved around the ring alone. Members are judged on the ability to show, gait, and handle their own dogs as well as the grooming and overall care of the dog. Please enter this on your registration form

**CLASSES: DAIRY**

- a) A Summer Calf (Cloverbuds only) will be born between June 1<sup>st</sup> and June 30<sup>th</sup>, 2026.  
A Spring Calf will be one born between March 1st and May 15th, 2026.
- b) A Winter Calf is born between Dec. 1, 2025, and Feb. 29, 2026.
- c) A Fall Calf is born between Sept. 1 and Nov. 30, 2025.
- d) A Summer Yearling will be born between June 1 and Aug. 31, 2025.
- e) A Spring Yearling will be born between March 1 and May 31, 2025.
- f) First and second place selected to return for each dairy breed champion class. Each breed will have a champion, reserve champion and honourable mention, which will return for the Overall Champion Dairy Animal Class.
- g) In the 4-H Exhibitor Herd class the 4-H member must have three dairy calves. They can be any breed of dairy. They must be this year’s project animals registered by May 31<sup>st</sup>, or by July 1, for Cloverbuds. All calves must have been shown by the 4-H member at their 4-H Club Achievement Day. The same 4-H member must show all calves in their individual class at the 4-H N.B. Provincial Show. Animals must line up like a Breeders Herd Class. For each herd -

- four 4-H members are allowed in the ring. The fourth one is to help place the calves.
- h) To select for the dairy members to compete in the Overall Showman Class at the show – the top two 4-H dairy members in the Cloverbud, Pre-Junior, Junior, Intermediate, and Senior showmanship categories will compete, and a Champion, Reserve Champion, and Honourable Mention will be chosen.
- i) The selection criteria for the TD Dairy Classic N.B. team to compete at the Royal Agricultural Winter Fair: The team will consist of two members and their calves from showmanship and 6 from conformation. A first and second alternate will be selected as well.
- Showmanship: The overall dairy champion showmanship class will consist of the top two show persons for cloverbud, pre-junior, junior, intermediate, and senior. If one, or both, of the top two member(s) is/are not eligible for the Royal, then the next eligible placing will be invited until there are 2 eligible members per class. The two highest placing Royal eligible members and calves will be selected to the Royal TD Classic Team.
- Conformation: Following each conformation class, Royal eligible members/calves will be asked to step ahead one step. The judge will then pick, at his/her discretion, calves based on their quality to return for the conformation classic selection which will follow the overall dairy champion animal class.
- First and Second Alternate: Following the Royal conformation selection, the highest placed Royal eligible calves from each conformation class that has not already been selected for the team and has never shown a dairy animal at the Royal 4-H youth dairy show will be invited to participate in a showmanship class to select the first and second alternate.
- All calves must be 75% purebred. All members that make the Royal team (from both showmanship and conformation) will need to pay a non-refundable deposit of \$300 within 30 days of being selected. In showmanship and conformation, members must show their calf that they pre-registered for the Royal to qualify for the team. For the rules and regulations at the Royal, please visit: [TD Canadian 4-H Dairy Classic Competition • The Royal Agricultural Winter Fair \(royalfair.org\)](http://www.royalfair.org)
- j) It is recommended that 4-H dairy project members follow the Rules and Regulations for Showing Dairy Cattle as set out by Holstein Canada and Canadian Dairy Breeds. Available at [www.holstein.ca](http://www.holstein.ca).
- k) If there are less than three calves in a conformation class, then the calves will be grouped with the next smallest conformation class within the calf's age range.
- l) To achieve, all dairy members must be in good standing within their club and their project and must exhibit at least one dairy animal. Special circumstances will be reviewed on a case-by-case basis by the dairy committee. Cloverbuds may only show one calf born in the calendar year. Cloverbuds are the only age group allowed to show a summer (June) calf. A first-year junior member can only show one project animal from the list below. Second year dairy members can exhibit up to two calves from the list below. Those beyond year two in the dairy project can exhibit up to three calves from the list below. First year dairy members outside of the junior age group will need to consult with their dairy leader who will decide how many calves they can exhibit based on their experience.

1. Summer Calf (Cloverbud only)
2. Spring Calf
3. Winter Calf
4. Fall Calf
5. Summer Yearling
6. Spring Yearling

NOTE: 4-H members may use their last year's project animal if it still fits within a recognized age category. Members can only pick one calf per age category, i.e. no member will be allowed to exhibit a spring Holstein calf and a colored breed spring calf. No member will be allowed to exhibit more than three animals.

**VACCINATIONS:** Please consult with your veterinarian for a vaccination plan for your animal.

**Class 15: Showmanship**

- |         |                   |             |
|---------|-------------------|-------------|
| Section | 1. Cloverbud -    | Ages 6-8    |
|         | 2. Pre- Junior –  | Ages 9 - 11 |
|         | 3. Junior –       | Ages 12-14  |
|         | 4. Intermediate – | Ages 15-17  |
|         | 5. Senior –       | Ages 18-21  |

**Class 16: Holstein Heifers**

- Section 1. Summer Calf  
2. Spring Calf  
3. Winter Calf  
4. Fall Calf  
5. Summer Yearling  
6. Spring Yearling

**Class 17: Ayrshire Heifers**

- Section 1. Summer Calf  
2. Spring Calf  
3. Winter Calf  
4. Fall Calf  
5. Summer Yearling  
6. Spring Yearling

**Class 18: Jersey Heifers**

- Section 1. Summer Calf  
2. Spring Calf  
3. Winter Calf  
4. Fall Calf  
5. Summer Yearling  
6. Spring Yearling

**Class 19: Milking Shorthorn Heifers**

- Section 1. Summer Calf  
2. Spring Calf  
3. Winter Calf  
4. Fall Calf  
5. Summer Yearling  
6. Spring Yearling

**Class 20: Brown Swiss Heifers**

- Section 1. Summer Calf  
2. Spring Calf  
3. Winter Calf  
4. Fall Calf  
5. Summer Yearling  
6. Spring Yearling

**Champion Dairy Animal**

**Class 21: 4-H Exhibitor Herd Class**

**Royal Selection Class** – details to be posted at the show.

**CLASSES: GOAT**

General Rules:

- a.) All goats must be this year's project animals.
- b.) All goats must be tagged, identified, and registered by May 31, 2026.
- c.) Project animals must be shown at the 4-H Club Achievement Day with completed record book.
- d.) All market goats must be disbudded. Re-growth must not exceed 1 inch. Does shown in market classes must be disbudded in accordance with market animal rules. They must be a minimum of 40 pounds.
- e.) All animals must be fitted for the show.

**VACCINATIONS:** Please consult with your veterinarian for a vaccination plan for your animal.

**Class 22:**

- Section 1. a) Cloverbud Showmanship  
b) Junior Showmanship  
c) Senior Showmanship  
Champion Showmanship
- Section 2. a) Chevron – all breeds, castrated male, cull female or Pygmy – born January 1- April 30, 2026.  
b) Doeling – all breeds – born January 1- April 30, 2026.  
c) Dry Yearling Doe – any female born the previous calendar year that has not yet kidded.  
d) Milking Doe – any doe in milk production.  
e) Buckling – dairy breed – born January 1- April 30, 2026
- Section 3. a) Meat Market Goat – altered male or female, no bucks, born January 1 – April 30, 2026

- b) Junior Meat Breeding Doe – registered or grade, born January 1 – May 15, 2026
- c) Senior Meat Breeding Doe – registered or grade, born September - December 2025
- d) Yearling Meat Dry Breeding – registered or grade, born the previous calendar year that has not yet kidded.
- e) Two-Year-Old Meat Goat – grade – must have kidded within 12 months prior to the show.

**CLASSES: DRAFT HORSE AND PONY:**

**Ringside Dress Rules**

- a) Interbreed Competition; Cloverbud, Junior and Senior members will be competing at the same time for the ringside dress competition.
- b) Time limit of 30 minutes for senior, 20 minutes for Cloverbud and Junior, for ringside dress.
- c) Senior members are expected to roll mane and braid tail. Cloverbud and Junior members are expected to groom and answer questions about the care of their horses. Members' grooming kits should be complete.
- d) One attendant only will be allowed to hold horse's head while in the ring for ringside dress.
- e) Draft ponies may be used.
- f) There is no sharing of project animals in draft horse.

**VACCINATIONS:** It is recommended that equine be vaccinated for Tetanus, Rabies, Eastern/Western Encephalomyelitis (EEE/WEE) and West Nile. Because horses co-mingle it is also recommended that horses have Equine Influenza, Equine Herpes (Rhinopneumonitis) and Strangles as these 3 diseases are highly contagious.

**Showmanship Rules**

- a) Draft Horses may be shown in a halter or bridle; however, a bridle provides a greater level of control. Halters and bridles shall be properly fitted. Show halters/bridles are usually white in colour. No whips are allowed in the ring but the member will be permitted to carry a small short stick/crop. Horses should enter the ring at a slow walk and line up for judging. They will be shown both at a walk and trot towards and away from the judge. Some judges will combine this action using a pattern. Watch the person in charge who will indicate it is your turn to go.
- b) Members will show the horse they showed in the Ringside Dress competition.

**Riding Class Rules**

- a) This class is optional – to be entered only if desired.
- b) Horses to be shown in either English or Western attire/tack or driving bridle; no bareback pads.
- c) To be judged as a pleasure riding class – to be shown both ways of the ring at a walk/trot/jog. To be judged on manners and performance – the ability to stand quietly and back easily.

**Single wagon or cart class** - Members are not permitted to drive stallions.

- a) This class is optional - to be entered only if desired.
- b) Horses must be hooked up in single style to either a driving cart or a single wagon.
- c) Holding a whip is optional.
- d) Members must enter the arena on a walk, and then proceed according to the ringmaster's instructions.
- e) Members will be asked to walk, trot, drive on, halt and back their horses.
- f) Members will be unable to share horses, unless they are in separate classes.
- g) Members are able to receive help in harnessing their horses, however, must assist in the harnessing and preparation.
- h) Horses' manes should be rolled and tails braided and trimmed.

**Scout Class**

- a) This class is optional – to be entered only if desired.
- b) Horses must be equipped in either a work harness or show harness.
- c) Each participant must drive their animal through the course hauling the tire or log without knocking over the pylons.
- d) Participants will be docked 3 points for each pylon they knock over.
- e) Members will be timed and their final time minus any penalty points will be their score.

**Class 23:**

- Section 1.
- a) Cloverbud Ringside Dress
  - b) Junior Ringside Dress
  - c) Senior Ringside Dress

- Section 2.
  - a) Cloverbud Showmanship
  - b) Junior Showmanship
  - c) Senior Showmanship
  
- Section 3
  - a) Cloverbud Draft Horse Under Saddle
  - b) Junior Draft Horse Under Saddle
  - c) Senior Draft Horse Under Saddle
  
- Section 4.
  - a) Cloverbud Single wagon or cart class
  - b) Junior Single wagon or cart class
  - c) Senior Single wagon or cart class
  
- Section 5.
  - a) Cloverbud Scoot Class
  - b) Junior Scoot Class
  - c) Senior Scoot Class

**CLASSES: LIGHT HORSE:**

**General:**

- a) All members must show their 2025-2026 achievement day project animals in the same style of tack that was used at Achievement Day. No Cross-tacking will be allowed, unless competing in the gymkhana classes.
- b) Box stalls stabling will be provided. Exhibitors are responsible for cleaning out their stalls at the end of the show.
- c) Excessive use of artificial aids (i.e. whips, spurs, etc.) will not be allowed. This rule will be enforced at the discretion of the judge.
- d) Horses being shown western in a western bit must use only one hand on the reins or ride two-handed if using a snaffle bit. **Western Bits:** means a curb bit that has a solid or broken mouthpiece, shanks, and acts with leverage. All curb bits must be free of mechanical devices and should be considered a standard western bit. Standard western bit includes: **Shank, Bar, Three Piece Mouthpiece, or Standard.** Grazing, broken mouthpiece, half breeds and spades are standard; rollers, covers and spring-loaded bits are permitted, but port must not be higher than 3 1/2 inches (8.89cm). **English Bits:** On broken mouthpieces, all smooth, round, twisted, slow twist, corkscrew, double twisted wire (mouthpieces) and straight bars or solid mouthpieces with a maximum port height of 1 1/2 inches (3.81cm) are acceptable. Any bit having a fixed rein requires use of a curb chain, which must be at least 1/2 inch (1.27 cm) in width and lie flat against the jaw of the horse. **Prohibited.** Slip or gag bits, donut, elevator bits or flat polo mouthpieces are prohibited as well as English bits of any style featuring cathedral, fishback, or donut mouthpiece; rough, sharp material, **No Mechanical hackamores, bosals, or bitless bridles are permitted – only a Certified Bitless Bridle.** The judge may prohibit the use of bits and equipment he or she may consider too severe. A bit cannot be physically or mechanically changed to increase the severity of its use and may be eliminated at the discretion of the judge.
- e) Horses must be shown in halter for Western showmanship classes.
- f) Horses must be shown in a bridle for English showmanship classes.
- g) No Stallions will be allowed.
- h) 4-H Light Horse will be following the Equine Canada rules.
- i) The walk/jog classes are provided for beginning riders or those who have green horses only. Beginner rider is defined as a member who has not completed one full year of the walk-jog classes. A green horse is one that has their walk/jog but is still working on the lope/canter. A 4-H member can compete in the walk/jog classes and only the walk/jog classes for up to three years to provide for safety of both rider and horse.
- j) Overall Winner will be based on the highest accumulation of points in the following classes:
  - a) Western Equitation or English Equitation or Walk/trot Equitation, Cloverbud, Junior and Senior Categories.
  - b) Showmanship, Cloverbud, Junior and Senior categories.
  - c) Judging, Cloverbud, Junior and Senior categories.
- k) For those members with no horse and/or who were unable to do the equitation the essay topics are:
 

|        |                                      |                 |
|--------|--------------------------------------|-----------------|
| Year 1 | Safety and the Horse                 | 350-500 words   |
| Year 2 | What to look for when buying a horse | 500-1000 words  |
| Year 3 | Horse Psychology                     | 1000-1500 words |
| Year 4 | Riding Seat Possibilities            | 1500-2000 words |
- l) There is no sharing of project animals in light horse.

- m) Properly fitted and fastened **SEI-ASTM** approved equestrian helmets must be worn by ALL participants.
- n) The safety of those present is paramount and the judge may call an exhibitor to the centre of the ring or excuse them from the ring if they feel safety is an issue. The Judge's decision is final.
- o) Stable Management: All light horse members will complete a stable management component immediately following the light horse show. Stable management will be conducted in the barns. Members are expected to be at their stall area when the light horse show is finished in the ring. Stable Management will be counted towards the overall light horse score.
- p) **For the safety of those present and for the animals – there will be no tying of animals to the stalls in the alleyway.**

**English Riders: Rules for showmanship, equitation, and pleasure classes.**

- a) English Ponies are those measuring no more than 14.2 hands. If there are sufficient numbers of horses and ponies, the classes will be sub-divided.
- b) English riders must wear an approved riding helmet with a safety harness, blazers, jodhpurs, and English riding boots. This is to be worn for equitation and pleasure classes. For showmanship, members may wear their English attire (their achievement day attire must be worn in showmanship). **AS STATED IN RULE (F) IF A MEMBER DOES SHOWMANSHIP IN ENGLISH ATTIRE, THEY MUST SHOW WITH A BRIDLE.**
- c) English riders must use 2-handed direct reining.

**Western Riders: Rules for showmanship, equitation, and pleasure classes.**

- a) Western Ponies are those measuring no more than 14.1 hands. If there are sufficient numbers of horses and ponies, then the classes will be subdivided.
- b) Western riders must wear a properly fitted western hat for showmanship and a properly fitted helmet for riding classes, long sleeved shirt fully extended and buttoned at the cuffs; or western show jackets. A scarf or tie; western style boot with a riding heel. This is to be worn for showmanship, equitation, and pleasure classes. Chaps may not be worn for showmanship classes.
- c) Two-handed direct (i.e. English) reining will not be permitted in western 4-H classes.

**Gymkhana** (time and weather permitting)

- a)
- b) Members **must** wear proper footwear. **LONG SLEEVED, FULLY EXTENDED SHIRTS OR SWEATERS AND PANTS. (NO JOGGING PANTS OR SHORTS) are to be worn at all times.**
- c) **A MEMBER COMPETING IN THE GYMKHANA EVENTS MUST WEAR A HELMET.**
- d) Members may cross tack for games only.
- e) Members must use their own 4-H N.B. Show horses for the games: Exceptions to this rule must be taken to the show committee prior to the games.
- f) Properly fitted gaming tack will be allowed (i.e.: bandages, tie downs, etc.) This rule will be enforced at the discretion of the judge.
- g) The Barrel Race is not part of the gymkhana.

**VACCINATIONS:** It is recommended that equine be vaccinated for Tetanus, Rabies, Eastern/Western Encephalomyelitis (EEE/WEE) and West Nile. Because horses co-mingle it is also recommended that horses have Equine Influenza, Equine Herpes (Rhinopneumonitis) and Strangles as these 3 diseases are highly contagious.

**Class 24:**

- Section 1.
  - a) Cloverbud Western Showmanship
  - b) Cloverbud English Showmanship
  - c) Jr. Western Showmanship
  - d) Jr. English Showmanship
  - e) Sr. Western Showmanship
  - f) Sr. English Showmanship
  
- Section 2.
  - a) Cloverbud Western Equitation
  - b) Cloverbud Western Pleasure
  - c) Jr. Western Equitation
  - d) Jr. Western Pleasure

- e) Sr. Western Equitation
- f) Sr. Western Pleasure

- Section 3.
- a) Cloverbud English Equitation
  - b) Cloverbud English Pleasure
  - c) Jr. English Equitation
  - d) Jr. English Pleasure
  - e) Sr. English Equitation
  - f) Sr. English Pleasure

- Section 4.
- a) Cloverbud Walk-Jog Equitation
  - b) Cloverbud Walk-Jog Pleasure
  - c) Jr. Walk-Jog Equitation
  - d) Jr. Walk-Jog Pleasure
  - e) Sr. Walk-Jog Equitation
  - f) Sr. Walk-Jog Pleasure

- Section 5.
- a) Cloverbud Barrel Race
  - b) Jr. Barrel Race
  - c) Sr. Barrel Race
  - d) Walk-Jog Barrel Race

- Section 6.
- A) Cloverbud Essay – only for those without a horse.**
  - B) Jr. Essay – only for those without a horse.**
  - C) Sr. Essay- only for those without a horse.**

**Overall High Point**

**CLASSES: MINIATURE HORSE**

- a) All members must show their 2025-2026 achievement day project animals in the same style of tack that was used at Achievement Day
- b) Properly fitted and fastened **SEI-ASTM** approved equestrian helmets must be worn by ALL participants.
- c) The safety of those present is paramount and the judge may call an exhibitor to the centre of the ring or excuse them from the ring if they feel safety is an issue. The Judge’s decision is final.
- d) For the safety of those present and for the animals – there will be no tying of animals to the stalls in the alleyways.**
- e) Miniature horses must be 4-H member’s project animal and have been registered with the Provincial 4-H Office by May 31<sup>st</sup>. They also must have been shown at your 4-H Club Achievement Day.

**Miniature Horse cart class** - Members are not permitted to drive stallions.

- a) This class is optional - to be entered only if desired.
- b) Horses must be hooked up in single style to a driving cart.
- c) Holding a whip is optional.
- d) Members must enter the arena on a walk, and then proceed according to the ringmaster’s instructions.
- e) Members will be asked to walk, trot, drive on, halt and back their horses.
- f) Members will be unable to share horses, unless they are in separate classes.
- g) Members are able to receive help in harnessing their horses, however, must assist in the harnessing and preparation.

**Class 25:**

- Section 1.
- a) Cloverbud Showmanship
  - b) Junior Showmanship
  - c) Senior Showmanship
- Section 2.
- a) Cloverbud Cart Class
  - b) Junior Cart Class
  - c) Senior Cart Class

- Section 3.        a) Cloverbud Barrel Race  
                      b) Jr. Barrel Race  
                      c) Sr. Barrel Race

**CLASSES: POULTRY**

General Rules:

- a) All poultry must be this year’s project animals.
- b) Project animals must be shown at 4-H Club Achievement Day with completed record book.
- c) Please bring your own cages to the show.
- d) A pullet is a female chicken under one year old
- e) A hen is a female chicken over a year old
- f) A cockerel is a male chicken under one year old
- g) A cock is a male chicken over a year old

**VACCINATIONS:** There are no required vaccines for poultry.

**Class 26:**

- Section 1.        a)        Cloverbud Showmanship  
                      b)        Junior Showmanship  
                      c)        Senior Showmanship

- Section 2.                    Pullet  
 Section 3.                    Cockerel  
 Section 4.                    Hen  
 Section 5.                    Cock

**CLASSES – RABBIT**

- a. New Brunswick 4-H follows the American Rabbit Breeders Association (ARBA) Standard of Perfection (SOP) in defining rabbit breeds.
- b. Rabbits must be a minimum of 8 weeks of age to show as per guideline from the Maritime Rabbit Breeders Association (MRBA).
- c. Year 1 members can exhibit a maximum of 2 project animals. Year Two members can exhibit a maximum of 4 project animals (**only one per class**). Year Three members and beyond can exhibit a maximum of 6 project animals.
- d. Rabbits must be 4-H member’s project animals and have been registered with the Provincial 4-H Office by July 1<sup>st</sup>. They also must have been shown at your 4-H Club Achievement Day.
- e. Fancy Rabbits: Junior animals are those under 6 months of age (Born between March 1 and May 15<sup>th</sup> of the current year). Senior animals are those over 6 months of age on the day of the show (Born before March 1<sup>st</sup> of the current year).
- f. Commercial Rabbits: Junior animals are those under 6 months of age (Born between March 1 and May 15<sup>th</sup> of the current year). Intermediate animals are those between 6-8 months of age (Born between Jan 1 – Feb 29 of the current year). Senior animals are those 8 months of age and over on the day of the show (Born before Dec 1 of the previous year).
- g. Pet Rabbits: The Pet rabbit category is for rabbit members who have a rabbit that is not eligible for competition in the Fancy or Commercial classes. This includes rabbits that are not purebred or have been spayed or neutered. They may not be a showable colour for their breed or have a disqualification according to the American Rabbit Breeders Association (ARBA) Standard of Perfection (SOP). Rabbits exhibited in the Pet Category must be born prior to May 15<sup>th</sup> of the current year. Members may only enter 1 rabbit in the Pet Category per year. There will only be Pet Category Class; bucks and does will be judged together. Members can take a Pet Rabbit as a 4-H Rabbit Project beyond the first year.
- h. Please bring your own cages to the show.

**VACCINATIONS:** No known vaccines at present.



**VACCINATIONS:** Please discuss with your veterinarian. Clostridial diseases – (pulpy kidney, tetanus and blackleg). Rabies is recommended and Covexin for youngstock.

**Class 28:**

- Section 1.           a)       Cloverbud Sheep Showmanship  
                          b)       Junior Sheep Showmanship  
                          c)       Senior sheep Showmanship

**Class 29: Suffolk**

- Section 2. Ewe Lamb  
              3. Ram Lamb  
              4. Yearling Ewe  
              6. Market Lamb

**Class 30: North Country Cheviot**

- Section 2. Ewe Lamb  
              3. Ram Lamb  
              4. Yearling Ewe  
              6. Market Lamb

**Class 31: Dorset**

- Section 2. Ewe Lamb  
              3. Ram Lamb  
              4. Yearling Ewe  
              6. Market Lamb

**Class 32: Hampshire**

- Section 2. Ewe Lamb  
              3. Ram Lamb  
              4. Yearling Ewe  
              6. Market Lamb

**Class 33: Crossbred**

- Section 2. Ewe Lamb  
              3. Ram Lamb  
              4. Yearling Ewe  
              6. Market Lamb

**Class 34: All Other Breeds**

- Section 2. Ewe Lamb  
              3. Ram Lamb  
              4. Yearling Ewe  
              6. Market Lamb

**CLASSES: LIVESTOCK COSTUME CLASS**

- a) All members with an animal registered for the 2026 Provincial Show will be eligible to compete. You must use your own animal for this class that you showed at your 2026 Achievement Day.
- b) Members must pre-register for this event.
- c) The livestock will be divided into two groups: large animal (beef, dairy, light horse, draft horse) and small animal (goat, rabbit, sheep, poultry, canine, miniature horse). The two classes may be sub-divided into heats if there are significant numbers in each class.
- d) Members with multiple animals in the show **can only pick one animal to compete with** in the costume class. Members **cannot enter in both the small and large livestock.**

**Class 35: Livestock Costume Class**

- Section 1.           a) Small Livestock (goat, rabbit, sheep, poultry, canine, miniature horse)  
                          b) Large Livestock (beef, dairy, light horse, draft horse)

## **LIFE SKILLS CLASSES**

MEMBERS MUST ENTER IN THE PROPER CLASSES ONLINE, AS NO CHANGES WILL BE MADE AT THE SHOW, UNLESS APPROVED BY THE SHOW COMMITTEE.

1. a) If numbers warrant, classes will be further subdivided
- b) Life skill project members may exhibit all items as scored on Achievement Day in a Cloverbud, Junior or Senior category unless otherwise specified in individual classes. Members can only enter in the project(s) that they achieved in.
- c.) In the self or group determined class, if we have included a class for this project then you will be judged in this project area. For example, if you are in your sixth year of crafts – we will have a Jr. crafts, Sr. crafts and a self-determined craft.
- d.) If less than three articles in a class, then they will be grouped into a miscellaneous class.

### **CLASS 36: CAKE DECORATING**

- Section 1: Decorated Cake
- Section 2: Tip and Border Tray
- Section 3: Marzipan Collection
- Section 4: Flower Tray
- Section 5: Rolled Fondant Decorations
- Section 6: Sugar Moulds

Top Decorated Cake  
Top Decorating Article

### **CLASS 37: CLOVERBUD PROJECT**

Each 4-H Cloverbud member will enter their display showing his-her project work for the year. All items shown on Achievement Day must be exhibited at the 4-H Provincial Show.

- Section 1: Cloverbud Project Display  
Top Cloverbud Project Display

### **CLASS 38: CRAFTS AND DESIGN**

- Section 1: Needlecraft – cross stitch, embroidery, needlepoint, crewel, canvas cross stitch, plastic canvas work, huck weaving.
- Section 2: Wearable Art – articles that can be worn and have additional decoration such as painting, appliqué, jewels, beading, etc.
- Section 3: Quilting – quilts, wall hangings, pillows, place mats, hot mats, etc. The majority of the quilting must be done by hand.
- Section 4: Hooking – all latch and punch items – rugs, pillows, wall hangings, proddy hooking.
- Section 5: Decorative Crafts – decoupage, dough art, decorative candles, silk flowers, garden stones, sand art.
- Section 6: Art and Drawing – note paper art, painting, drawing, silk screening, batik, stencilling, glass etching, mobiles, ink and wash, Ukrainian eggs, etc.
- Section 7: Toys – stuffed animals, dolls used as toys, puppets, kites, models, ornamental dolls.
- Section 8: String Art – macramé, dream catchers, friendship bracelets, hemp jewellery.
- Section 9: Pottery – clay base, slab work, ceramics made from scratch, mosaic tiles.
- Section 10: Knitting and Crochet – hairpin lace, tating, etc.
- Section 11: Machine Sewn Crafts – pillows, drapes, tote bags, purses, etc.
- Section 12: Tole Painting

- Section 13: Historical Crafts – dying and spinning wool, tanning, basketry, soap making, etc.
- Section 14: Metal Work – metal jewellery, tin punch, tin can art, welding projects, stained glass, etc.
- Section 15: Nature Craft – handmade and decorative articles that contain natural items such as driftwood, pinecones, dried and pressed flowers, items found in nature.
- Section 16: Paper Craft – paper tole, origami, creative twist, quilling, etc.
- Section 17: Seasonal Crafts – articles depicting a seasonal theme, Easter, Christmas, Halloween, Thanksgiving, etc.
- Section 18: Miscellaneous – any article not covered in the other sections.

Top Craft Article

**Note: Please specify on Registration forms the type of article; e.g., cross-stitch, embroidery knitting, crocheting, ceramics, wooden craft, etc. Also, please note A for Cloverbud, B for Junior and C for Senior members under the specific section.**

### **CLASS 39: FOODS**

A 4-H member may exhibit in the foods class provided the member has received a ribbon on one of his/her food articles exhibited at Achievement Day. **Recipes from the 4-H Foods Project Books (Recipe Book) in the following categories must be used. Also, please note A for Cloverbud, B for Junior and C for Senior members under the specific section.**

- Section 1: Snacks, Biscuits
- Section 2: Baked Goods – Cookies, Loaf, Muffins, etc.
- Section 3: Preserved Product – Jam, Jelly, Salsa, Pickles
- Section 4: Canadian Cuisine – article and display on region in Canada.
- Section 5: Display on Vegetarism, Organic Foods, Food Service or Where does our food come from.
- Section 6: Display on Meat Cookery, Lunch Box meals, Main Meals, or Nutrition and Health.

Top Food Article

### **CLASS 40: OUTDOOR LIVING**

**Also, please note A for Cloverbud, B for Junior and C for Senior members under the specific section.**

- Section 1: Reports – write ups on hikes, animals, birds, camping trips, etc.
- Section 2: Posters – photo stories, information on plants or animals, etc.
- Section 3: Specialty Item - anything that will not fit in other sections.
- Section 4: Utility Item - walking sticks, bat house, bird house, etc.
- Section 5: Display – items such as models, etc.
- Section 6: Collections – leaves, plaster tracks, twigs, seeds, rocks, insects, etc.
- Section 7: Survival Kits
- Section 8: First Aid Kits

Top Outdoor Living Display

### **CLASS 41: PHOTOGRAPHY**

Each 4-H member may enter a display showing his/her work for the year. All items of the project shown on Achievement Day must be exhibited at the 4-H N.B. Show. This includes the record book. When entering please specify Cloverbud, Junior or Senior.

- Section 1: Display - The display should include the collection of 10-15 photographs taken during the club project year, the collection of pet animal picture, a home, a plant taken from the viewpoint of a very young child. Three examples of textures, leading lines, and framing. The collection of at least three photographs of another 4-H project or topic that would spark interest in that project. The collection of at least three photographs that intend to trigger a specific reaction in the viewer. (labelled) One special project from the list in the Activity Guide.
- Section 2: Canvas Prints (any size)
- Section 3: Single Photo (any subject)

Top Photography Display

### **CLASS 42: SCRAP BOOKING**

Each 4-H member may enter a display showing his/her work for the year. All items of the project shown on Achievement Day must be exhibited at the 4-H N.B. Show. This includes the record book and album.

- Section 1: Cards, Signs, Invitations, Gift Tags, Place Settings
- Section 2: Single Page using 4-H theme
- Section 3: Single Page using family, friends, or pet theme
- Section 4: Single Page using any other theme
- Section 5: Album with 5 or fewer pages
- Section 6: Album with more than 5 pages

Top Scrap booking Display

### **CLASS 43: TRASH TO TREASURE –**

- Section 1: Items made in the Paper Perfect Module
- Section 2: Items made in the Groovy Glass Module
- Section 3: Items made in the Marvellous Metal Module
- Section 4: Items made in the Pretty Plastic Module
- Section 5: Items made in the Cool Clothing Module
- Section 6: Items made in the Heavenly Household Items Module

Top Trash to Treasure Display

### **CLASS 44: WOODWORKING:**

Articles, which do not qualify under the following sections, are to be shown in Section 9.

- Section 1: Tables, Bookcases, End Tables
- Section 2: Other Household Furniture – stools and chairs, etc.
- Section 3: Large Shelves and Racks
- Section 4: Small Shelves and Racks
- Section 5: Decorations – trinket boxes, mirrors, wall clocks, carvings, decoys, frames, lawn decorations, signs, etc.
- Section 6: Novelty – games, puzzles, toys, door knockers, small wagons.
- Section 7: Utility – paper towel racks, note holders, cutting boards, footstools, toolboxes, nesting boxes, bookends, bird feeders, bird houses, bread boxes, window boxes, wood boxes, lawn furniture, mailbox posts, park benches.
- Section 8: Refinished Articles
- Section 9: Miscellaneous  
Top Woodworking Article

### **CLASS 45: GARDENING:**

- Section 1: Flower arrangements – includes potted flowers or cut flowers in a vase. Members will be judged on the arrangement of the flowers.
- Section 2: Vegetables – plated vegetables (four vegetables on a plate – indicate the type of vegetable on your registration)

### **CLASS 46: SUGAR BUSH:**

- Section 1: Poster Display or Tabletop Display– members can submit their poster display or tabletop display that they displayed at achievement day.

### **CLASS 47: MISCELLANEOUS PROJECTS:**

#### **Section 1: SELF & GROUP DETERMINED**

Each 4-H member or group of 4-H members will enter a display showing his-her-their project for the year provided the total project has received a score of **350 points or more** on Achievement Day. The age of the oldest member determines if it is Cloverbud, Junior or Senior Group Determined.

All items shown at achievement day must be exhibited at the N.B. 4-H Show including the record book. Those members in a group determined project may enter as a group if their project is one item, or as individuals all working within the same project. This must be indicated on the registration form and exhibit tag. The display will be judged on quality, appearances, originality, educational value to the member and the teaching value to other people.

Classes:

- Section 1: Self & Group Determined  
Section 2: Any other project not listed in the show book  
Top Self or Group Determined Project

The display will be judged on neatness, information to the member and educational value to other people.

**CLASS 48: 4-H Record Book**

All N.B 4-H members must complete a record book for their project. Members may bring their record book for each project to be judged at the Provincial Show.

Section 1: Non-Livestock

- a). Cloverbud
- b). Junior
- c.) Senior

Section 2: Livestock

- a). Cloverbud
- b). Junior
- c). Senior

**CLASS 49: NEW BRUNSWICK BLUEBERRY MUFFINS COMPETITION (Open to all members)**

All 4-H Cloverbud, Junior and Senior Members are eligible.

1. Contestants are required to enter with the Registrar of the Show by August 1. An entry fee of \$ 5.00 per member must accompany the registration.
2. Items for this competition will be delivered to the life skills project exhibit area of the show the same time as other life skills project articles.
3. Ribbons will be awarded to the Top Cloverbud, Junior and Senior Members in the Competition.
4. 4-H Members will exhibit a paper plate containing 4 muffins, using the following recipe which makes 1 ½ dozen:

- 3 cups white flour
- 1 cup sugar
- 1 tbsp. baking powder
- ¼ tsp. baking soda
- ¼ tsp. salt
- 3 large eggs
- 1 cup milk
- ¼ cup fancy molasses
- ¼ cup vegetable oil
- 1 tsp. vanilla
- 2 cups New Brunswick Blueberries

Add the beaten liquid ingredients to the dry ones with a few swift strokes just until it is moistened. Fold the blueberries in just before everything is moist. To bake preheat the oven to 400°F. Fill muffin cups 2/3 full and sprinkle with a mixture of sugar and cinnamon just prior to baking. Bake until golden about 15-20 minutes.

**CLASS 50: DECORATED CAKE COMPETITION (Open to all members)**

All 4-H Cloverbud, Junior and Senior Members are eligible.

1. Contestants are required to enter with the Registrar of the Show by August 1. An entry fee of \$ 5.00 per member must accompany the registration.
2. Items for this competition will be delivered to the life skills project exhibit area of the show the same time as other life skills project articles.
3. Ribbons will be awarded to the Top Cloverbud, Junior and Senior Members in the Competition.
4. 4-H members will exhibit a decorated cake. The cake will be a 9x13 single layer cake. It can be any flavour of cake but must be nut free. The cake should be in a covered container as plans are to eat the cakes during the Corn Boil and BBQ portion of the show.

Decorated Cake will be judged on the following basis:

1. Overall appearance. 20 %
2. Choice and use of colours. 20 %

- |   |      |
|---|------|
| 3. Attention to detail.                   | 20 % |
| 4. Suitable border design and creativity. | 20 % |
| 5. Presentation of cake-on-cake board.    | 20 % |

**CLASS 51: 4-H CLUB SCRAPBOOK COMPETITION**

Each 4-H Club may enter one scrapbook for this competition. An entry fee of \$5.00 per scrapbook must accompany the entry. Scrapbook must be done in an 8 ½ inch by 11 inch or 12 inch by 12 inch scrapbook or a 2 inch ring binder. Pages in the scrapbook should be 8 1/2 inches by 11 inches or 12 inches by 12 inches. Scrapbook is to arrive with other life skills project articles on Tuesday night between 5:00 p.m. and 9:00 p.m. Scrapbook is to be prepared by the 4-H members in the club. It should contain all aspects of your club if possible and any information on your club that you would like to share. Scrapbook is to include the 4-H club's name.

Scrapbook will be judged on the following basis:

- |                                      |      |
|--------------------------------------|------|
| 1. Overall appearance                | 20 % |
| 2. Originality in concept and design | 20 % |
| 3. Educational or promotional value  | 20 % |
| 4. Quality of workmanship            | 20 % |
| 5. Compliance with regulations       | 20 % |

**CLASS 52: 4-H Woodsmen Competition**

New Brunswick's 4-H clubs have been divided into 2 teams: the western clubs & the eastern clubs. Watch and cheer as the teams battle it out in bow sawing, pulp pits, crosscut sawing, kettle boil and team relay to determine which team will win the provincial championship!

Members who are interested in joining a team can contact Ally for further information.

- Section 1: Open Kettle Boil: Open to all members who would like to try. Members MUST pre-register for this event. Only a limited number of supplies are available.
- a.) Cloverbud Kettle Boil
  - b.) Junior Kettle Boil
  - c.) Senior Kettle Boil
- Section 2: Open Cloverbud Relay: Open to any Cloverbud member who would like to try.

**2026 4-H N.B. Provincial Show Sponsors**

**The official sponsor list will be posted at the show and in the show program.**

**Thank you to our show Committee Reps for all their hard work to help plan the show!**

**Jayde McConchie, Allison Haaris, Ally Bauchman, Starla Brymer, Ella Flewelling, Alain  
Blanchette, Alyssa Thorne, Veronica Locke, Ashley Storey, Kate Coleman, Tracy Shea, and John  
Riordon.**

## **I Practice Good Sportsmanship**

1. I thank judges for their time.
2. I wish my competitors good luck.
3. I don't complain when I don't win.
4. I cheer for everyone – even my competitors.
5. I am truthful and honest in the things I do.
6. I understand that competition results in both winners and losers.
7. I respect the judge's decisions.
8. I thank my parents and program organizers for their support.
9. I am cheerful and nice towards everyone.
10. I am happy, but do not gloat or brag about my accomplishments.
11. I don't make excuses when I don't perform well.
12. I treat animals and people with kindness and respect.
13. I do not argue with judges or program organizers.

**4-H New Brunswick Provincial Show**  
**Barn Display Scoring Sheet**

**Project:** \_\_\_\_\_

| Criteria to be Judged   | Points to be Awarded | 4-H Club | 4-H Club | 4-H Club | 4-H Club |
|---|----------------------|----------|----------|----------|----------|
| <b>Decorations:</b><br>Neat and attractive, well planned, consistent colour scheme. No lights in the display.   | 10                   |          |          |          |          |
| <b>Backdrop:</b><br>Original, simple, not overdone.   | 10                   |          |          |          |          |
| <b>Signs:</b><br>Tidy, easily read, complete information, one per animal.   | 10                   |          |          |          |          |
| <b>Animal Arrangement:</b><br>Animals attractively arranged, preferably by size and breed, correctly spaced.  | 5                    |          |          |          |          |
| <b>Livestock:</b><br>Clean, well-groomed, comfortable, tied properly (if applicable), fed and watered.  | 10                   |          |          |          |          |
| <b>Aisles:</b><br>Clean and neat, adequate width for visitors.  | 15                   |          |          |          |          |
| <b>Bedding Pack:</b><br>Adequate bedding.   | 10                   |          |          |          |          |
| <b>Feed and Storage:</b><br>Neat and orderly, buckets and dishes clean. Feed out of sight if possible.  | 15                   |          |          |          |          |
| <b>Knowledge and Courtesy:</b><br>Friendly, polite, able to answer questions about exhibit or animals, co-operative with 4-H members, leaders, show committee and public. Able to answer questions about 4-H. | 10                   |          |          |          |          |
| <b>4-H Members Appearance:</b><br>Clothes and person neat and clean, appropriate dress.   | 5                    |          |          |          |          |
| <b>TOTAL POINTS</b>   | 100                  |          |          |          |          |

\*\* Judging may take place from 7:00 a.m. on Friday until noon on Saturday.

## Contagious Diseases Information: Guidelines for 4-H leaders with livestock projects

This handout has been created to inform leaders, parents, and exhibitors for the **purpose of the inspections** and to **prevent animals** from *arriving* and *not passing an inspection*.

It has been determined by the New Brunswick 4-H Show Committee that all animals will be inspected upon arrival to a Provincial 4-H show ground.

The animal projects to be inspected by a veterinarian(s) prior to a 4-H Provincial Show include but not limited to the following:

- a) Bovine (beef and dairy cattle)
- b) Poultry and other birds
- c) Ovine (sheep)
- d) Caprine (goats)
- e) Equine (horse)
- f) Rabbits
- g) Canine (dog)

The Executive Director of 4-H will arrange for veterinary inspections months prior to the show by contacting the office of the Chief Veterinary Officer. Show dates should be given when contacting the Chief Veterinary Officer.

**Standard Operating Procedures (SOP)** are in place for the inspections. There are separate SOPs for those animals who do not pass an inspection, become sick while at a 4-H Provincial Show etc..

Inspections are done to enhance animal health at a co-mingling site. Animals are inspected for evidence of contagious and infectious diseases such as but not limited to warts, ringworm, lice, pinkeye, pneumonia, orf, and strangles.

Should an exhibitor's animal have a condition that is NOT contagious but presents with signs like a contagious disease (e.g., a horse with heaves that is coughing and has a clear runny nose), a veterinary note is recommended to ensure the animal is permitted on the show grounds.

All exhibitors should be prepared in the event their animal does not pass inspection (e.g., give the animal a rest period and trailer the animal back home same day). The New Brunswick Show Committee has arranged for veterinary care should animals get sick at the provincial show. If an exhibitor elects to use veterinary services, costs will be incurred to the owner/person responsible for the animal for the treatment of the animal(s).

### 4-H Exhibitors:

The goal is to present a positive image of animals to the public by supporting good animal husbandry and welfare practices. As leaders and exhibitors, animals ideally need to be checked **prior to leaving** the farm before being loaded. Exhibitors that share trailers with other farms need to be aware of the health of the animals already on the trailer (e.g., if there signs of pneumonia in an animal already loaded, it is recommended to not load your animal as there is a potential risk of your animal not passing inspection but worse getting sick and bringing it back to your farm). Work with your veterinarian to establish vaccination programs for your animal(s). Do not bring visibly sick or unthrifty animals to a show.

During the show, provide adequate bedding and plenty of air movement (fans) to keep animals comfortable. Make sure there is always water available and that the animals get the same feed as home. Avoid nose-to-nose contact with animals from other farms and keep wheelbarrows, pitch forks and other equipment clean.

After the show, unload show animals away from home herd and house separately from the rest of the herd for 3-4 weeks and use separate equipment for returning animals. Your work routine should be modified so that returning animals are attended to last and monitor animals for signs of disease such as fever, cough, nasal discharge etc.

### Cattle projects:

All cattle entering the show must have a **Canadian Cattle Identification Agency (CCIA) ear tag**. The Canadian Food Inspection Agency (CFIA) may be present on site to check for proper tagging as this is a federal requirement for animals moving off farm. For dairy projects, the Livestock Premises Identification (LPID) number of where the animal came from and where the animal is going (e.g., show ground should have an LPID number) will need to be recorded in proAction records back at the home farm.

## Sheep projects:

All sheep (including lambs) must have an approved **Canadian Sheep Identification Program (CSIP) ear tag** before they leave their farm of origin.

## Poultry projects:

NEW: The ILT vaccine for poultry is no longer a required vaccine – should you wish to vaccinate your animal, please contact your veterinary office. It is important to maintain your show birds' vaccination records which should indicate species of bird, band number, and date of vaccination.

## All Animal Projects:

Exhibitors are responsible for examining their animals often at home as they prepare for the show. If an exhibitor has concerns prior to the show, consultation with their veterinarian, and leader is recommended. Sending pictures of your concern to the 4-H Executive Director may also be done.

In the interest of maintaining a high standard of animal health, all animal projects are subject to an inspection *upon arrival*. If there is evidence of *an infectious or contagious disease* the owner of the animal shall be required to remove the animal from the premises.

Leaders and 4-H exhibitors should be aware of the *Codes of Practice* for poultry, swine, dairy cattle, beef cattle, horses, sheep, goats, and rabbits. These codes are used to guide farmers and veterinarians on best practices associated with each species. There is a Code of Practice for Canadian Kennel Operations from the Canadian Veterinary Medical Association (see your local veterinarian) which has information on food, water, animal well-being including common diseases of dogs. Exhibitors must only bring healthy animals to a show, exhibit etc. The guidelines in this document have been agreed upon by the New Brunswick 4-H Show Council.

## What is involved in an inspection?

### An inspection involves:

A visual examination of an animal by a veterinarian and running their hands over the animal to assess the animal's physical health status.

When a veterinarian is visually inspecting an animal, they are looking for the following indicators of an infection or contagious disease:

- Discharge from the eyes, nose, or mouth (e.g., nose has a yellow discharge in a nostril)
- Animal is depressed (e.g., ears down, looking dull)
- Coughing, heavy breathing (e.g., considering the temperature and weather of the day)
- Skin lesions (e.g., suggestive of warts or ringworm)

These indicators do not necessarily have to be in any combination (e.g., a cough and a runny nose may occur together in an animal, or an animal may only have a runny nose at the time of inspection).

When a veterinarian is touching an animal, they are looking for signs of disease such as but not limited to ringworm, warts and lice.

Below is a list of diseases to watch for. There are many more diseases and a discussion with your 4-H leader and veterinarian are recommended.

### 1. Warts

Warts are caused by a virus that is contagious to other cattle.

#### Action plan:

- a) If warts are detected at home, the exhibitor is responsible for seeking veterinary advice or assistance to remove warts at least 3 weeks prior to the show dates for healing to occur.
- b) Any animal exhibiting more than **3 warts that are bigger than the size of a pea will not pass inspection**. All warts need to be removed.
- c) Animals presented with bleeding (e.g., from a wart that is removed prior to inspection) must have the bleeding stopped within 30 minutes. If the bleeding does not stop, the animal will not pass inspection and not be permitted on the show ground.

## 2. Ringworm

Ringworm is a highly contagious disease to other animals and to people. Visibly active lesions (crust, *no hair growth in the center of the lesion*) regardless of size of lesion found on an animal will deem the animal unacceptable to enter the show.

### Action plan:

- a) Any animal exhibiting visible lesions that have no hair growth, skin is scabby, crusty, or irritated looking will not be permitted to show.



**Above are examples of lesions that are unacceptable.**



**Above is a picture of an animal that has active lesions and would not be permitted to show.**

- b) animals that have lesions that are small to moderate in size (<2.5 cm in diameter, the size of a toonie), has hair regrowth occurring within the lesion and the skin is not crusty, scabby, or irritated looking will be permitted to show.



**Above are examples of acceptable lesions – hair is growing back, and skin is not crusty looking.**



**This lesion would be acceptable as there is hair growth in the middle of the lesion.**

**NOTE:** Animals that have had ringworm may be accepted if the ringworm is **NOT ACTIVE**. The treatment for ringworm is effective but lesions can take a long time to heal.

### **3. Lice**

Lice is contagious to other animals. Lice does not affect humans.

#### **Action plan:**

- a) Animals will not be accepted at the show if there are visible lice present on the animal.
- b) Seek veterinary advice and or treat as soon as you see lice on your show animal.



**Lice present in the hair of a calf.**

#### 4. Mange

Mange is also highly contagious to other animals and to people. Animals with mange are extremely itchy and often stamp their feet and swish their tails. The skin may have thick crusts present as mites burrow underneath the skin.

##### **Action plan:**

- a) Animals with mange must not be shown.



**An image of a cow with mange in the head and neck.**



**An image of a dairy cow with tailhead mange.**

#### 5. Pneumonia

Pneumonia is caused by several different agents (e.g., virus, bacteria, or parasites) and is very contagious to other animals.

##### **Action plan:**

- a) Animals with pneumonia must not be at the show.
- b) Signs of pneumonia in an animal may be but not limited to a fever, runny nose, cough, lethargy, depression, wet around the breast area (with rabbits and birds) and not milking or laying eggs.



**An image of a calf with pneumonia.**

## **6. Pinkeye**

### **Action plan:**

- a) Animals with pinkeye must not be shown.



**An image of a cow with a runny eye suggestive of pinkeye.**

## **7. Lameness**

### **Action plan:**

- a) Animals that have an obvious lameness (non-weight bearing) must not be shown due to welfare issues (e.g., lameness of an animal indicates pain and an animal in pain should not be made to walk or be trailered to a show).
- b) If the lameness is obvious to the public, then the animal should not be in the show ring.
- c) If an exhibitor is concerned about lameness in their animal, they should contact their veterinarian.
- d) The 4-H Show Committee reserves the right to check the lame animal before it goes in the show ring as weight bearing lameness may be acceptable depending on the circumstances (e.g., a fall in the trailer may deem the animal sore but with rest the animal is fine to walk).

## 8. Orf

Orf or sore mouth infection, pustular dermatitis, scabby mouth is a viral infection found primarily in sheep and goats and can be transmitted to people.

### Action plan:

- a) Since it is a highly contagious disease, animals who exhibit symptoms of “orf” will not be permitted to show.



**An image of a goat with orf.**

## 9. Strangles

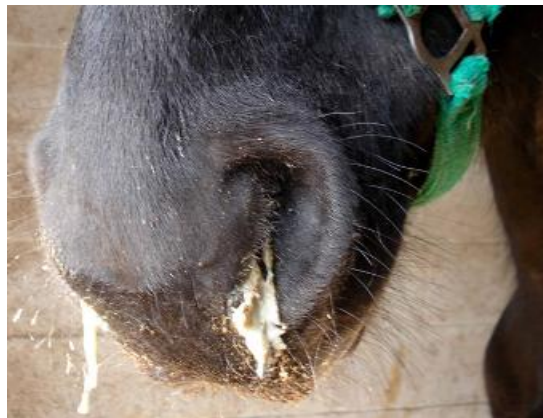
Strangles is a highly contagious bacterial infection of equine.

### Action plan:

- a) Horses with signs suggestive of strangles (discharge from nose, enlarged lymph nodes around face and under chin, depressed) must not be shown.
- b) A clear to white discharge *may* be acceptable, but a discharge that is yellow to green in colour will not pass inspection.
- c) An animal with a nasal discharge without swelling around the face will be examined closely.



**An image of a horse with swollen lymph nodes around face (inside the red circle).**



**An image of a horse with a runny nose.**

## **10. Diarrhea**

Diarrhea can be caused by many agents (e.g., virus, bacterial or parasite) and even with changes to feed (nutritional diarrhea). It is important to watch for changes in your animal's attitude (e.g., becomes depressed, not eating), blood in the diarrhea etc.

### **Action plan:**

- a) Contact your veterinarian for advice if needed.
- b) Animals showing signs of diarrhea *with other symptoms* such as dehydration, pale gums, weakness etc., must not be shown.



**An image of a calf with diarrhea.**

**A checklist for exhibitors with animal projects:**

It is important to understand that infections and contagious diseases will impact animals co-mingling at shows and sick animals need to be identified and treated prior to show day.

Animals should be checked daily starting at least 3 weeks before the show. It may be beneficial to an exhibitor to use a calendar while performing checks to better identify when issues start.

**Routine checks by exhibitors include:**

- 1) Check the skin/hair/fur/feathers of your animal daily for evidence of warts, ringworm, lice etc.
- 2) Check to ensure the animal is eating and drinking normally and if decreased then investigate the cause (e.g., take a temperature of your animal).
- 3) Check the eyes and nose of your animal daily for any discharge.
- 4) Check for a cough, heavy breathing.
- 5) Check for manure consistency, is the manure normal looking for your animal?

Talk to your veterinarian regarding vaccinations, biosecurity and other preventative tools which could be used to prevent or reduce signs and symptoms of diseases, thus allowing your animal to be shown on show day.